



World Class Manufacturer of High Quality Petri Dishes

Environmentally Preferable STAR™DISH

Our **sterile and particulate-free Petri dishes** are made of crystal-clear virgin, high molecular polystyrene, produced by an ISO certified company. All dishes are *100% visually inspected*. Each lot undergoes a thorough **sterility testing** performed by an independent microbiological testing laboratory before a sterility certificate is issued. The testing procedure follows the latest USP standards. Phoenix Biomedical has been ISO registered since 1995.

We offer an upgraded and value-added packaging design. The cardboard inserts have been removed and two sterile REUSABLE liners have been added to reduce contamination risk. **All 600 per case** products contain **2 packs of 300 plates** wrapped in a REUSABLE liner, each holding 12 sleeves of 25 dishes. The innovative packaging simplifies the removal of the carton content and facilitates hygienic transfer technique to your laboratory or clean-room.



90x15mm STAR™DISH nesting ALPINE

The unique recessed lid on this dish offers excellent stacking stability and saves space. It works with most models of media pouring equipment, an absolute must for manual pourers. Four ventilation lugs on underside of lid allow for venting, and prevent condensation from developing and dripping onto culture. The extremely flat bottom allows a reduction in the amount of media required. Patented cross ribs on the bottom make the dish resilient and resistant to warpage when the media is poured at a high temperature. Excellent for performing colony counts, since ribs provide a useful border for making quadrants.

Mfr. No.	Product Description	Dimensions (cm)	Weight (kg)
360	90x15mm nesting ALPINE "stacking" with 4 vents & ISO mark 600 per case (24 sleeves)	57 x 38 x 39	7.0
361	90x15mm nesting ALPINE "stacking" without vents & with ISO mark 600 per case (24 sleeves)	57 x 38 x 39	7.0



90x15mm STAR™DISH semi-nesting ALPINE

Most suitable for use with high-speed media pouring machines. The recession on the lid has a smoother beveled angle allowing the dish to slide easily during automated pouring.

Mfr. No.	Product Description	Dimensions (cm)	Weight (kg)
370	90x15mm semi-nesting ALPINE "semi-stacking" with 4 vents & ISO mark 600 per case (24 sleeves)	57 x 38 x 39	7.0
371	90x15mm semi-nesting ALPINE "semi-stacking" without vents & with ISO mark 600 per case (24 sleeves)	57 x 38 x 39	7.0



100x15mm STAR™DISH ALPINE "FULL SIZE"

Has an exact dimension of 100mm in diameter and 15mm in height, versus nominal 100x15mm Petri dishes which are about 92mm in diameter. Ideal when a larger surface is required for culture and for antibiotic's sensitivity discs.

Mfr. No.	Product Description	Dimensions (cm)	Weight (kg)
356	100x15mm ALPINE FULLSIZE "semi-stacking" with 4 vents & ISO mark 264 per case (12 sleeves)	44 x 30.5 x 34	3.2

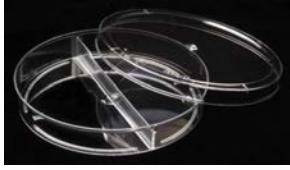


STAR™DISH "SPACE & MEDIA SAVER"

Due to its smaller diameter, this dish is perfect for users who want to save on the amount of media poured, as well as on storage space in the refrigerator and incubator.

Mfr. No.	Product Description	Dimensions (cm)	Weight (kg)
390	85x15mm SPACE & MEDIA SAVER "semi-stacking" with 3 vents & without ISO mark 600 per case (24 sleeves)	57 x 38 x 39	7.8

Environmentally Preferable STAR™DISH



90x15mm STAR™DISH ALPINE 2 Sections

For simultaneous differential studies of organisms or media in a common environment. Overall costs are reduced by minimizing use of dishes, media and space.

372	90x15mm ALPINE 2 Sections "semi-stacking" with 4 vents & ISO mark 600 per case (24 sleeves)	(cm) 57 x 38 x 39	(kg) 7.6
-----	--	----------------------	-------------



90x15mm STAR™DISH Sectional Dishes

Ideal for simultaneous differential studies of organisms or media in a common environment. Individual compartments are numbered for easy identification. Overall costs are reduced by minimizing use of dishes, media and space.

331	90x15mm 3 Sections "semi-stacking" with 4 vents & ISO mark 600 per case (24 sleeves)	(cm) 57 x 38 x 36	(kg) 7.7
-----	---	----------------------	-------------



332	90x15mm 4 Sections "semi-stacking" with 4 vents & ISO mark 600 per case (24 sleeves)	(cm) 57 x 38 x 36	(kg) 8.2
-----	---	----------------------	-------------



90x20mm STAR™DISH

Accommodates deeper media fills for longer culturing periods.

385	90x20mm "semi-stacking" without vents 384 per case (24 sleeves)	(cm) 57 x 38 x 36	(kg) 7.4
-----	--	----------------------	-------------



90x25mm STAR™DISH "HIGH PROFILE"

Specifically designed to accommodate more media, excellent for mycology, histology and pathology labs, as well as, seed germination work. Particularly excellent if longer culturing periods are required.

002	90x25mm High Profile "semi-stacking" without vents 312 per case (24 sleeves)	(cm) 57 x 38 x 36	(kg) 6.8
305	90x25mm High Profile "semi-stacking" without vents 312 per case (24 sleeves)	(cm) 57 x 38 x 36	(kg) 6.8
307	90x25mm High Profile "semi-stacking" with vents 312 per case (24 sleeves)	(cm) 57 x 38 x 36	(kg) 6.8

Environmentally Preferable STAR™DISH



140x15mm STAR™DISH

Ideal for antibiotic susceptibility testing, accommodates 2 to 3 membrane filters in a single dish. It is large enough for bioburden determination and sterility testing of medical devices. It is extremely flat and has markings for placing up to 6 strips of Etest®.

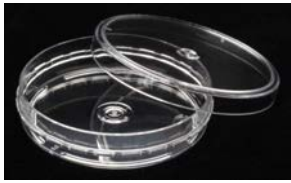
		(cm)	(kg)
180	140x15mm "semi-stacking" with 6 vents 120 per case (6 sleeves)	45 x 30.5 x 34	4.1
181	140x15mm "semi-stacking" without vents 120 per case (6 sleeves)	45 x 30.5 x 34	4.1



55x15mm STAR™DISH

This dish saves space in refrigerators and incubators, and is ideal when small quantities of media are used. It accommodates single membrane filters for water and pharmaceutical testing.

		(cm)	(kg)
058	55x15mm "semi-stacking" with 3 vents 600 per case (30 sleeves)	36 x 30 x 31	3.6
057	55x15mm "semi-stacking" without vents 600 per case (30 sleeves)	36 x 30 x 31	3.6



47x12mm AQUA PLATE™

The AQUA PLATE™ is ideal for membrane filtration techniques. It accommodates a 47mm round membrane filter used for a variety of water testing, and is best for field sample collection. The AQUA PLATE™ is leak-proof.

		(cm)	(kg)
352	47x12mm Aqua Plate™ (Leak-Proof, Easy-Grip), w/o Vents 750 per case (30 sleeves)	36 x 30 x 31	4.3



35x12.5mm MICRO DISH

Ideal when only a very small sample is required. Also suitable for use with small filters and in pharmaceutical analysis.

		(cm)	(kg)
357	35x12.5mm "stacking" with 3 vents 720 per case (24 sleeves)	35 x 27 x 23	2.8

*This is a universal catalogue;
Please note that Petri-dish
referred to as 90x15mm in
Europe, Middle East, Far East
and Australia is EXACTLY
THE SAME dish referred to as
100x15mm in North and South
America.
The exception is #356, which
has an exact dimension of
100x15mm.*

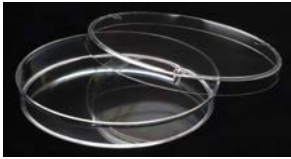


Conventional Petri Dishes And Specialty Plates



90x15mm Petri Dish

This dish offers distortion-free viewing, making it ideal for microscopic examination. The controlled bottom flatness ensures even distribution of media and organisms. The semi-stacking ring has been specifically designed to make the dish versatile and suitable for different makes and models of pouring equipment.



Mfr. No.	Product Description	Dimensions (cm)	Weight (kg)
112	90x15mm Petri dish with 3 vents & ISO mark 600 per case (24 sleeves)	57 x 38 x 39	9.1
113	90x15mm Petri dish without vents & with ISO mark 600 per case (24 sleeves)	57 x 38 x 39	9.1
114	90x15mm Petri dish with 3 vents & without ISO mark 600 per case (24 sleeves)	57 x 38 x 39	9.1



90x15mm Petri Dish

The semi-stacking ring on lid allows for easy transit during automatic filling. Available in the sliding version with a totally smooth lid.



Mfr. No.	Product Description	Dimensions (cm)	Weight (kg)
018	90x15mm Petri dish "semi-stacking" with 3 vents and with ISO mark 600 per case (24 sleeves)	57 x 38 x 39	9.0
019	90x15mm Petri dish "sliding" with 3 vents and with ISO mark 600 per case (24 sleeves)	57 x 38 x 39	9.0



90x14mm PetriClik™ DUAL-USE

Its small diameter, low height and unique recessed lid permit space savings in the user's incubator, refrigerator and during shipping. A recession around the dish bottom prevents media from drying and shrinking at the edges and it also allows up to 10% savings in the amount of media used per plate. The dish offers excellent stackability and is suitable for both automated and manual pouring. Our new PetriClik™ plates dual-use can be easily locked and reopened. The "locking" feature prevents an accidental opening of the plates after inoculation, assuring the integrity of the test results. In the case of pathogenic microorganisms, it offers additional preventative measure for the safety of working personnel.

109	90x14mm PetriClik™ Dual-Use Locking "SPACE & MEDIA SAVER" with 3 vents and ISO mark 600 per case (24 sleeves)	57 x 38 x 39	8.9
-----	--	--------------	-----



55x15mm ContactClik™ Plates DUAL-USE

With their unique design, they can be easily locked and reopened. No orientation required. Used for testing bioburden counts on working surfaces. The "domed" surface and exclusive media gripping tabs, help the media to stick to the dish, reducing drop-off. A special double ring around the outside of the dish helps prevent fingers from touching the media, thus reducing the possibilities of contamination.

116	55x15mm ContactClik™ Plates, "DOMED BASE" Dual-Use Locking 600 per case (30 sleeves)	41.5 x 35 x 26	6.0
-----	---	----------------	-----



100x15mm Square Petri Dish with Grid

Features 13mm grid marked in both directions. Suitable for bacteriological typing, probe assays, colony counts, susceptibility testing or any research and bacterial culture work requiring a large surface area.

050	100x15mm Square Petri dish with 13mm Grid 300 per case (15 sleeves)	57 x 38 x 39	9.7
-----	--	--------------	-----



World Class Quality

About Phoenix Biomedical

Phoenix Biomedical Products was founded in 1980 in Ontario, Canada expressly to manufacture premium quality sterile Petri dishes. Today, Phoenix is the industry's innovator and supplier of choice for medical testing, biotechnology, pharma and research industries in over 30 countries.

In 2013, the company designed and built a brand-new manufacturing plant in Murcia, Spain. In this ultra-clean, microbiologically controlled facility, with its ISO Class 5 cleanrooms, Phoenix Biomedical is capable of producing 200 million plates per year.

One of the most outstanding features of Phoenix Petri dishes is the total absence of particles, dust, foreign objects and hydraulic oil vapour which mask analysis results and give erroneous readings.

About our R&D and the Environment

Of particular interest is the innovative environmentally-preferable STAR™DISH series. The patented technology incorporated in the STAR™DISH allows a substantial reduction in the amount of plastic used to manufacture each dish, thus further reducing disposal waste and cost. The dish is excellent for performing colony counts, since the ribs provide a useful border for making quadrants.

Phoenix Biomedical adheres strictly to all GMP requirements and is ISO 9001 registered.



Phoenix Biomedical Products, S.L.

Tel: (34) 968 197610

E-mail: stardish@phoenix-biomed.com

www.phoenix-biomed.com

