



Founded in 1980, Phoenix Biomedical offers the largest assortment of **high-quality sterile and particulate-free Petri dishes**. The company is considered the most innovative and specialized manufacturer of ultra-clean, sterile Petri dishes.

PETRI DISHES

**Designed for Life Sciences and specifically
Biotechnology Applications**



Our latest additions to the **STAR™DISH** series, **140 x20mm, 25mm and 15mm**

Our dishes are made of crystal-clear, virgin, high molecular medical grade polystyrene. Produced in cleanrooms ISO Class V, the dishes are individually inspected and each lot undergoes **sterility testing** performed by a certified testing laboratory before sterility certificates are issued. The testing procedure follows current USP edition.

Our customers demand only the best

Today, those demanding the best quality available are our loyal and satisfied customers; Pharmaceutical, Biotechnology and Agriculture companies, Universities and Research Institutions, to name a few.

Our latest additions to the **STAR™DISH** series **140x20mm** and **140x25mm**, were developed with biotechnology in mind, particularly for the fast-growing field of agri-biotech applications, from developing and cultivation of seeds and plants to agrigenome sequencing.

With their flatness and superior light transmission properties, our dishes bring enhanced yield performance and improved quantities. As particulate-free, they can also be used for Tissue-Culture applications when cell attachment is not required.



Our dishes are particulate-free

Of particular interest is the unique environmentally-preferable **STAR™DISH** series. The patented technology incorporated in the star-ribbed design of the **STAR™DISH** allows for a substantial reduction in the amount of plastic used to manufacture each dish, thus further reducing disposal waste and harm to the environment. The savings in raw material used allow us to offer our dishes at a competitive prices.

Phoenix Biomedical Products S.L.

c/Verde, Parcela 3.7, Parque Tecnológico Fuente Álamo
Crta. del Estrecho-Lobosillo Km.2
30320 Fuente Álamo, MURCIA (SPAIN)
Tel: (34) 968 197610

Email: stardish@phoenix-biomed.com www.phoenix-biomed.com



90x20mm STAR™ DISH

Designed to accommodate more media. Excellent for seed germination work and fungal cultures. Particularly useful if longer culturing periods are required. Maximum fill 70 ml.

Product #385, 90x20mm classic design w/o vents, 384/cs

Product #387, 90x20mm classic design with vents, 384/cs



90x25mm STAR™ DISH

Similar to the above 90x20mm STAR™ DISH; it accommodates deeper media fills for longer culturing periods. Maximum fill 90 ml.

Product #002, 90x25mm ribbed design w/o vents, 312/cs

Product #307, 90x25mm classic design with vents, 312/cs

Product #305, 90x25mm classic design with vents, 312/cs



140x15mm STAR™ DISH

Suitable for initial stages of seed germination before the plants reach 15mm in height. Also commonly used for antibiotic sensitivity and bioburden determinations. Maximum fill 120 ml.

Product #180, 140x15mm ribbed design, with 6 vents, 120/cs

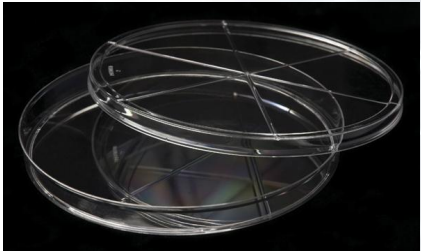
Product #181, 140x15mm ribbed design, w/o vents, 120/cs

Product #160, 140x15mm classic design, with 6 vents, 120/cs

Product #161, 140x15mm classic design, w/o vents, 120/cs

Product #170, 140x15mm gridded, with 6 vents, 120/cs

Product #171, 140x15mm gridded, w/o vents, 120/cs



140x20mm STAR™ DISH

Similar to the above, accommodates deeper fills for longer culturing periods. Acts as a small enclosed environment for plant propagation and fungal cultures. Maximum fill 180 ml.

Product #182, 140x20mm ribbed design, with 6 vents, 90/cs

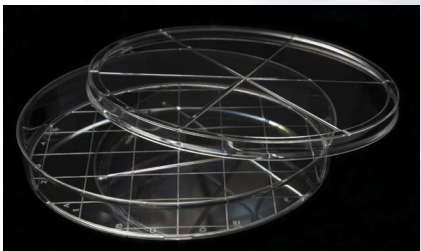
Product #183, 140x20mm ribbed design, w/o vents, 90/cs

Product #162, 140x20mm classic design, with 6 vents, 90/cs

Product #163, 140x20mm classic design, w/o vents, 90/cs

Product #172, 140x20mm gridded, with 6 vents, 90/cs

Product #173, 140x20mm gridded, w/o vents, 90/cs



140x25mm STAR™ DISH

Similar to the above, accommodates even deeper fills for longer culturing periods. It becomes a relatively large enclosed environment for insects and plant seedling. Maximum fill 250 ml.

Product #184, 140x25mm ribbed design, with 6 vents, 72/cs

Product #185, 140x25mm ribbed design, w/o vents, 72/cs

Product #164, 140x25mm classic design, with 6 vents, 72/cs

Product #165, 140x25mm classic design, w/o vents, 72/cs

Product #174, 140x25mm gridded, with 6 vents, 72/cs

Product #175, 140x25mm gridded, w/o vents, 72/cs



The non-vented dishes permit additional incubating time by allowing media to retain moisture for a longer period.